

WSA161i

HEAVY-DUTY INITIAL LIFTING STACKER 1.6T

 2000 kg
  3000 mm
  24 V Li-ion



The WSA161i is tailored for warehouses, logistics centers, and distribution hubs requiring both stacking and double decking operations. Thanks to its initial lift, operators can move goods across docks or uneven surfaces with ease, while proportional lifting and lowering ensure precision and care for fragile loads. With travel speeds up to 5.5 km/h, compact 810 mm chassis width, and turning radius of 1826 mm, it delivers agility even in narrow aisles.

| SPECIFICATION | REF | UNIT | VALUE |
|-----------------------------|-----------|------|-------------|
| Battery type | | | Li-ion |
| Battery nominal capacity K5 | | Ah | 100 |
| Battery voltage | | V | 24 |
| Rated capacity | Q | kg | 2000 |
| Load centre distance | c | mm | 600 |
| Service weight | | kg | 1120 |
| Height, mast lowered | h_1 | mm | 2015 |
| Lift | h_3 | mm | 2915 |
| Height, mast extended | h_4 | mm | 3495 |
| Overall length | l_1 | mm | 2028 |
| Overall width | b_1/b_2 | mm | 810 |
| Length to face of forks | l_2 | mm | 878 |
| Fork dimensions | s/e/l | mm | 60×185×1150 |
| Turning radius | Wa | mm | 1826 |
| Manufacturer | | | EP |
| Model designation | | | WSA161i |

Features

Initial lift with double pallet handling

The WSA161i's initial lift raises support arms independently, providing higher ground clearance for ramps and allowing operators to transport two pallets at once, doubling efficiency.



Fast stacking with proportional control

Equipped with high lifting and lowering speeds, plus proportional control, the WSA161i ensures precise and gentle handling of goods, even at heights up to 5.5 meters.

Advanced Li-ion power system

The 24V/100Ah Li-ion battery with integrated 24V/30A charger supports fast opportunity charging, zero maintenance, and emission-free operation. Optional 205Ah or lead-acid batteries extend runtime.



Operator-focused design

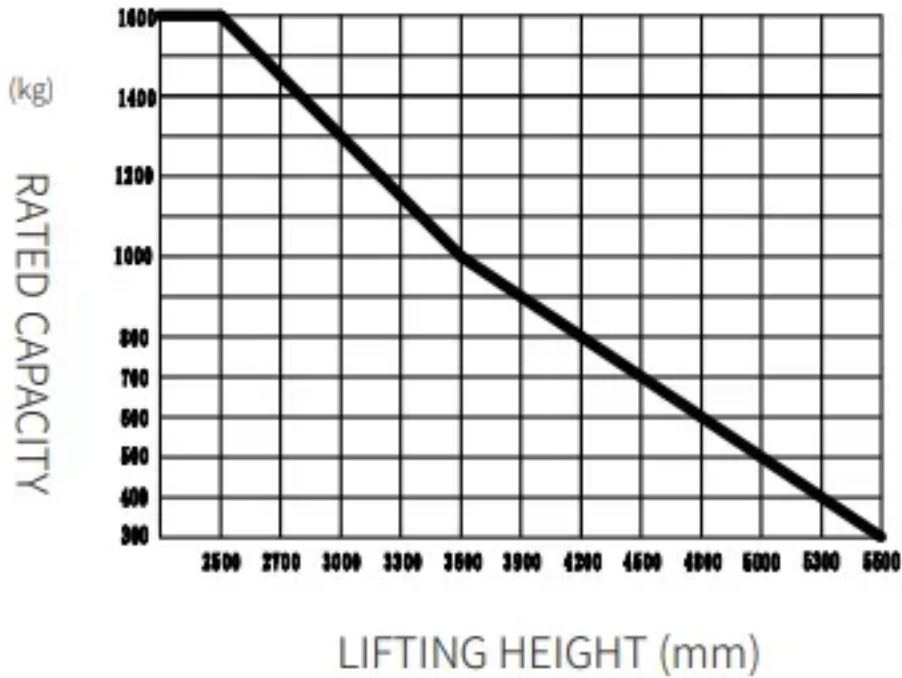
Practical features like integrated storage, a USB outlet for device charging, and an ergonomic tiller improve operator convenience, while the compact body and turtle speed mode ensure safe maneuverability in tight aisles.

VDI Chart

| | SPECIFICATION | REF | UNIT | VALUE |
|-------|--|--------------------------------|------|--------------|
| 1.1 | Manufacturer | | | EP |
| 1.2 | Model designation | | | WSA161i |
| 1.3 | Drive | | | Electric |
| 1.4 | Operator type | | | Pedestrian |
| 1.5 | Rated capacity | Q | kg | 2000 |
| 1.5.1 | Load capacity , load with mast lift | Q ₁ | kg | 1600 |
| 1.5.2 | Load capacity, load with support arm lift | Q ₂ | kg | 2000 |
| 1.6 | Load centre distance | c | mm | 600 |
| 1.8 | Load distance, centre of drive axle to fork | x | mm | 906 |
| 1.9 | Wheelbase | y | mm | 1608 |
| 2.1 | Service weight | | kg | 1120 |
| 2.2 | Axle loading, laden front/rear | | kg | 1090/2030 |
| 2.3 | Axle loading, unladen front/rear | | kg | 780/340 |
| 3.1 | Tyres | | | Polyurethane |
| 3.2 | Tyre size, front | | mm | 230×75 |
| 3.3 | Tyre size, rear | | mm | 85×70 |
| 3.4 | Additional wheels (castor wheels) | | mm | 130×55 |
| 3.5 | Wheels, number front/rear (x=drive wheels) | | | 1x,1/4 |
| 3.6 | Tread width, front | b ₁₀ | mm | 538 |
| 3.7 | Tread width, rear | b ₁₁ | mm | 385 |
| 4.2 | Height, mast lowered | h ₁ | mm | 2015 |
| 4.4 | Lift | h ₃ | mm | 2915 |
| 4.5 | Height, mast extended | h ₄ | mm | 3495 |
| 4.6 | Initial lift | | mm | 120 |
| 4.9 | Height drawbar in driving position min./max. | h ₁₄ | mm | 715/1200 |
| 4.15 | Height, lowered | h ₁₃ | mm | 92 |
| 4.19 | Overall length | l ₁ | mm | 2028 |
| 4.20 | Length to face of forks | l ₂ | mm | 878 |
| 4.21 | Overall width | b ₁ /b ₂ | mm | 810 |
| 4.22 | Fork dimensions | s/e/l | mm | 60×185×1150 |
| 4.24 | Fork carriage width | | mm | 750 |
| 4.25 | Distance between fork-arms | b ₅ | mm | 570 |

| | SPECIFICATION | REF | UNIT | VALUE |
|--------|---|----------------|-------|-----------------|
| 4.31 | Ground clearance, laden, below mast | | mm | 14 |
| 4.32 | Ground clearance, centre of wheelbase | m ₂ | mm | 14 |
| 4.34.1 | Aisle width for pallets 1000×1200 crossways | Ast | mm | 2646 |
| 4.34.2 | Aisle width for pallets 800 × 1200 lengthways | Ast | mm | 2560 |
| 4.35 | Turning radius | Wa | mm | 1826 |
| 5.1 | Travel speed, laden/unladen | | km/h | 5/5.5 |
| 5.2 | Lift speed, laden/unladen | | m/s | 0.23/0.3 |
| 5.3 | Lowering speed, laden/unladen | | m/s | 0.4/0.36 |
| 5.8 | Max. gradeability, laden/unladen | | % | 8/16 |
| 5.10 | Service brake | | | Electromagnetic |
| 5.11 | Parking brake | | | Electromagnetic |
| 6.1 | Drive motor rating S2 60 min | | kW | 1.6 |
| 6.2 | Lift motor rating at S3 15% | | kW | 4.5 |
| 6.4 | Battery nominal capacity K5 | | Ah | 100 |
| 6.4 | Battery voltage | | V | 24 |
| 6.4.1 | Battery type | | | Li-ion |
| 6.5 | Battery weight | | kg | 40 |
| 6.6 | Energy consumption according to DIN EN 16796 | | kWh/h | 0.8 |
| 6.7 | Turnover output according to VDI 2198 | | | 56 |
| 6.8 | Turnover efficiency according to VDI 2198 | | | 55.01 |
| 8.1 | Type of drive unit | | | AC |
| 10.5 | Steering design | | | Mechanical |
| 10.7 | Sound pressure level at the driver's seat | | dB(A) | 74 |
| 15.1 | Charger output current | | A | 30 |

RATED CAPACITIES GRAPH



Mast Options

| MAST TYPE | LIFT HEIGHT (H3, MM) | MAST LOWERED HEIGHT (H1, MM) | MAST EXTENDED HEIGHT, NO BACKREST (H4, MM) | MAST EXTENDED HEIGHT, WITH BACKREST (H4, MM) |
|-------------|----------------------|------------------------------|--|--|
| 2-Wide Mast | 2600 | 1815 | 3095 | |
| 2-Wide Mast | 3000 | 2015 | 3495 | |
| 2-Wide Mast | 3300 | 2185 | 3835 | |
| 2-Wide Mast | 3600 | 2312 | 4089 | |
| 2-Wide Mast | 3900 | 2462 | 4389 | |
| 2-Wide Mast | 4150 | 2592 | 4649 | |
| 2-Free Mast | 2650 | 1815 | 3118 | 1320 |
| 2-Free Mast | 2950 | 1962 | 3412 | 1470 |
| 2-Free Mast | 3250 | 2115 | 3718 | 1620 |
| 3-Free Mast | 4000 | 1820 | 4445 | 1345 |
| 3-Free Mast | 4500 | 2020 | 4945 | 1545 |

| MAST TYPE | LIFT HEIGHT (H3, MM) | MAST LOWERED HEIGHT (H1, MM) | MAST EXTENDED HEIGHT, NO BACKREST (H4, MM) | MAST EXTENDED HEIGHT, WITH BACKREST (H4, MM) |
|-------------|----------------------|------------------------------|--|--|
| 3-Free Mast | 4800 | 2115 | 5245 | 1645 |
| 3-Free Mast | 5000 | 2185 | 5445 | 1715 |
| 3-Free Mast | 5500 | 2385 | 5945 | 1915 |

Options

| ITEM | OPTIONS (optional items marked in yellow) |
|---------------------------------|---|
| Fork dimension | 1150*570 1150*685 |
| Fork lowered height | 92 |
| Fork carriage width option | 750 |
| Backrest height | 388 |
| Load wheel type | Double |
| Load wheel material | PU |
| Drive wheel material | PU Trace PU Rubber |
| Battery capacity | 100Ah Li-ion 205Ah Li-ion 210Ah Lead Acid 240Ah Lead acid |
| Charger | 24V-30A internal (Li-ion) 24V-100A external (Li-ion) 24V-30A external (Lead-acid) |
| Battery display indicator (BDI) | With time (bluetooth) |
| Castor wheels | Yes and not customized |
| Water auto-filling system | No Yes and not customized |
| Warning lamp | No Yes and not customized |
| Area warning lamp | No Yes and not customized |
| Rearview mirror | No Yes and not customized |
| Buzzer | No Yes and not customized |
| Turtle speed | Yes and not customized |
| Telematics | No Yes and not customized |
| Charging interlock-UK standard | No |
| USB outlet | Yes and not customized |
| Battery side pull function | No |
| Cold storage | No |
| Proportional lift system | Yes and not customized |

ITEM

OPTIONS (optional items marked in yellow)

Keypad option

No | Yes and not customized
