




# WPL202

## HEAVY-DUTY LI-ION PALLET TRUCK 2.0T

 2000 kg
  125 mm
  24 V Li-Ion



The WPL202 is ideal for warehouses, distribution hubs, and retail environments where space utilization is critical. Thanks to its compact design and small turning radius (1320 mm), it easily navigates lorries and narrow aisles. The cold storage version (0 ~ -20°C) with waterproof components, heated battery, rubber wheels, and low-temperature hydraulic oil makes it suitable for frozen food and pharmaceutical logistics.

SPECIFICATION	REF	UNIT	VALUE
Battery type			Li-Ion
Battery nominal capacity		Ah	100
Battery voltage		V	24
Load capacity	Q	kg	2000
Load centre distance	c	mm	600
Service weight		kg	320
Lift height	h <sub>3</sub>	mm	125
Overall length		mm	1620
Overall width	b <sub>1</sub> /b <sub>2</sub>	mm	714
Length to face of forks	l <sub>2</sub>	mm	470
Fork dimensions	s/e/l	mm	55/170/1150
Turning radius		Wa	1320
Operator type			Pedestrian
Load distance, centre of drive axle to fork		mm	982
Wheelbase		mm	1300
Axle loading, laden front/rear		kg	825/1495

# Features

## Ultra-slim design for confined spaces

With only 470 mm chassis length and a turning radius of 1320 mm, the WPL202 is built to maximize maneuverability in tight environments such as lorries, narrow aisles, and compact warehouses. This compact size also optimizes transport and reduces freight costs.

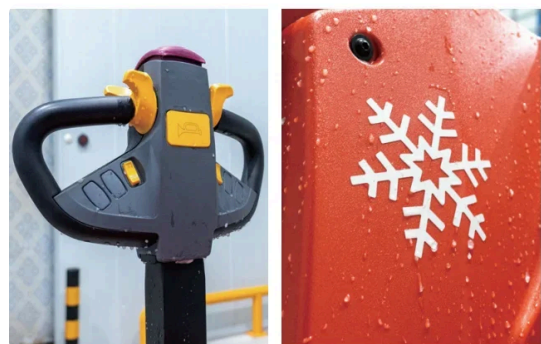
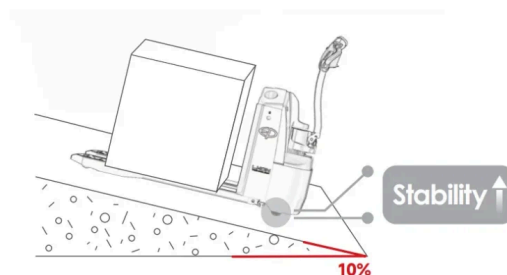


## Lithium technology with integrated charger

Equipped with a 24V/100Ah Li-ion battery and 30A integrated charger, the WPL202 supports fast opportunity charging with zero maintenance. This provides maximum uptime in multi-shift operations and greater operational flexibility.

## Unique synchronous castor wheels

The WPL202 adopts synchronized castor wheels that ensure superior stability and gradeability, even when operating on ramps or uneven floors. This advanced design minimizes tipping risks and provides smoother load handling.



## Cold storage option available

The WPL202 cold storage version is equipped with waterproof tiller head, heated Li-ion battery, rubber drive wheel, and low-temperature hydraulic oil, enabling reliable operation in frozen conditions down to -20°C.

## Durability and user convenience

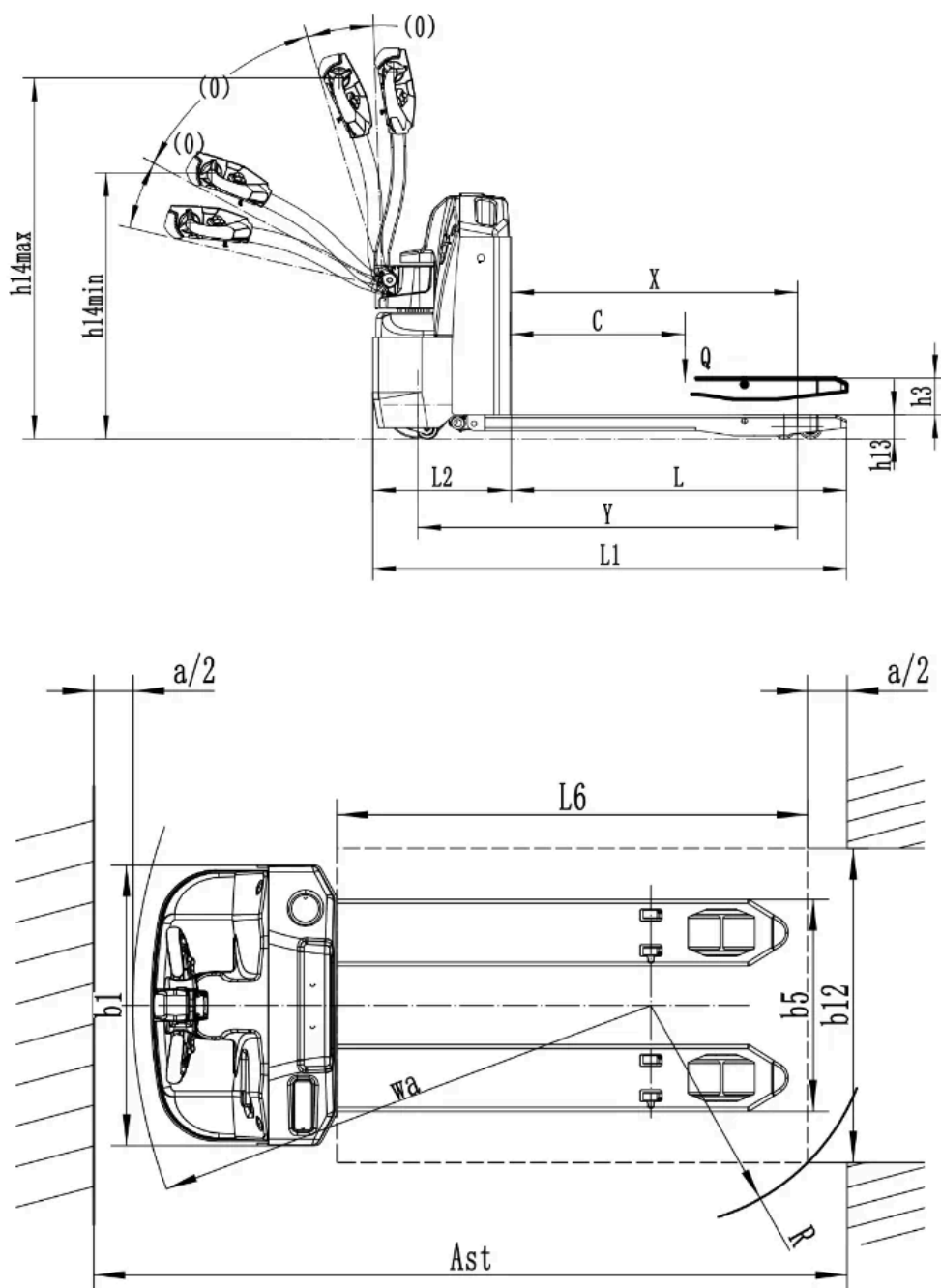
Built with market-proven components, the WPL202 guarantees long-term reliability. Options like keypad entry and telematics further enhance convenience and allow integration with modern fleet management systems.



## VDI Chart

	SPECIFICATION	REF	UNIT	VALUE
1.4	Operator type			Pedestrian
1.5	Load capacity	Q	kg	2000
1.6	Load centre distance	c	mm	600
1.8	Load distance, centre of drive axle to fork		mm	982
1.9	Wheelbase		mm	1300
2.1	Service weight		kg	320
2.2	Axle loading, laden front/rear		kg	825/1495
2.3	Axle loading, unladen front/rear		kg	255/65
3.1	Tyre type			Polyurethane
3.2	Tyre size, front		mm	230x75
3.3	Tyre size, rear		mm	80x85
3.5	Wheels, number front/rear (x=drive wheels)			1/2/4
3.6.1	Tread width, front	b <sub>10</sub>	mm	483
3.7.1	Tread width, rear	b <sub>11</sub>	mm	370
4.0	Max lift height	H	mm	125
4.19	Overall length		mm	1620
4.20	Length to face of forks	l <sub>2</sub>	mm	470
4.21	Overall width	b <sub>1</sub> /b <sub>2</sub>	mm	714
4.22	Fork dimensions	s/e/l	mm	55/170/1150
4.32	Ground clearance, centre of wheelbase		mm	27
4.34.1	Aisle width for pallets 1000×1200 crossways		Ast	2153
4.34.2	Aisle width for pallets 800×1200 lengthways		Ast	2080
4.35	Turning radius		Wa	1320
4.4	Lift height	h <sub>3</sub>	mm	125
5.1	Travel speed, laden/unladen		km/h	5.5/6
5.10	Service brake			Electromagnetic

	SPECIFICATION	REF	UNIT	VALUE
5.2	Lifting speed, laden/unladen		m/s	0.022
5.3	Lowering speed, laden/unladen		m/s	0.039
5.8	Max. gradeability, laden/unladen		%	10/16
6.1	Drive motor rating S2 60 min		kW	1.6
6.2	Lift motor rating at S3 15%		kW	0.8
6.4	Battery nominal capacity		Ah	100
6.4	Battery voltage		V	24
6.4.1	Battery type			Li-Ion
6.5	Battery weight		kg	44
8.1	Type of drive control			AC
10.5	Steering design			Mechanical
10.7	Sound pressure level at the drivers ear		dB(A)	70



## Options

ITEM	OPTIONS (optional items marked in yellow)
Fork dimension	540*1150   540*850   540*1000   540*1220   540*1300   540*1450   540*1600   540*1800   540*2000   540*2400   685*850   685*1000   685*1150   685*1220   685*1300   685*1450   685*1600   685*1800   685*2000   685*2400
Fork lowered height	85

ITEM	OPTIONS (optional items marked in yellow)
Load wheel type	Double   Single
Load wheel material	PU
Drive wheel material	PU   Trace PU
Battery capacity	100Ah Li-ion
Charger	24V-30A Integrated
Battery display indicator (BDI)	With hourmeter
Vertical handler working	Yes and not customized
Telematics	No   Yes and not customized
Charging interlock-UK standard	No
Castor wheels	Yes and not customized
Drive cover off the ground	35mm
Entry roller	No
Pin code	No