



# ESi161

## PEDESTRIAN DOUBLE-DECK STACKER 1.6T

1600 kg 1608 mm 24 V



The ESi161 is ideal for warehouses, retail distribution, and logistics centers requiring both flexibility and efficiency in pallet handling. Its double-deck capability increases productivity in goods transfer and order picking, while the mono mast design with transparent panel offers excellent visibility for safe and precise stacking. Thanks to its compact size and small turning radius of 1473 mm, the ESi161 is especially suited for tight storage areas, trucks, and docks.

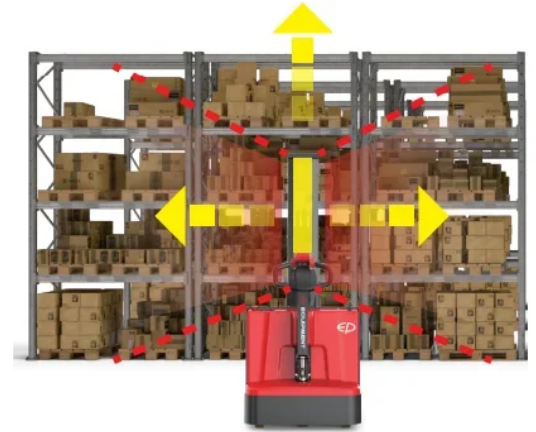
SPECIFICATION	REF	UNIT	VALUE
Battery nominal capacity		Ah	100
Battery voltage		V	24
Load capacity	Q	kg	1600
Load centre distance	c	mm	600
Service weight		kg	510
Retracted mast height	$h_1$	mm	1942
Lift height	$h_3$	mm	1520, 800
Height, mast extended	$h_4$	mm	1986
Overall length		mm	1770
Overall width	$b_1/b_2$	mm	800
Length to face of forks	l2	mm	620
Fork dimensions	s/e/l	mm	55/190/1150
Turning radius		Wa	1473
Manufacturer			EP
Model designation			ESi161
Drive			Electric

# Features

---

## Double-deck efficiency with initial lift

The ESi161 allows operators to transport two pallets simultaneously or easily cross ramps and uneven floors, significantly improving productivity in daily operations.



## Compact chassis with turtle speed mode

At just 800 mm wide, the stacker is optimized for confined aisles and truck loading. The turtle button ensures controlled, precise operation in tight spaces.

## Safe and clear mast visibility

The mono mast with transparent panel provides operators with an unobstructed view of the forks, enhancing stacking precision and improving workplace safety.



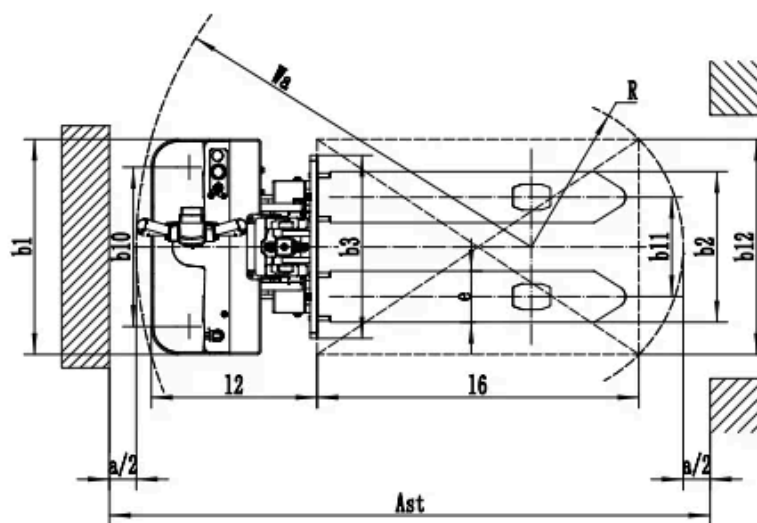
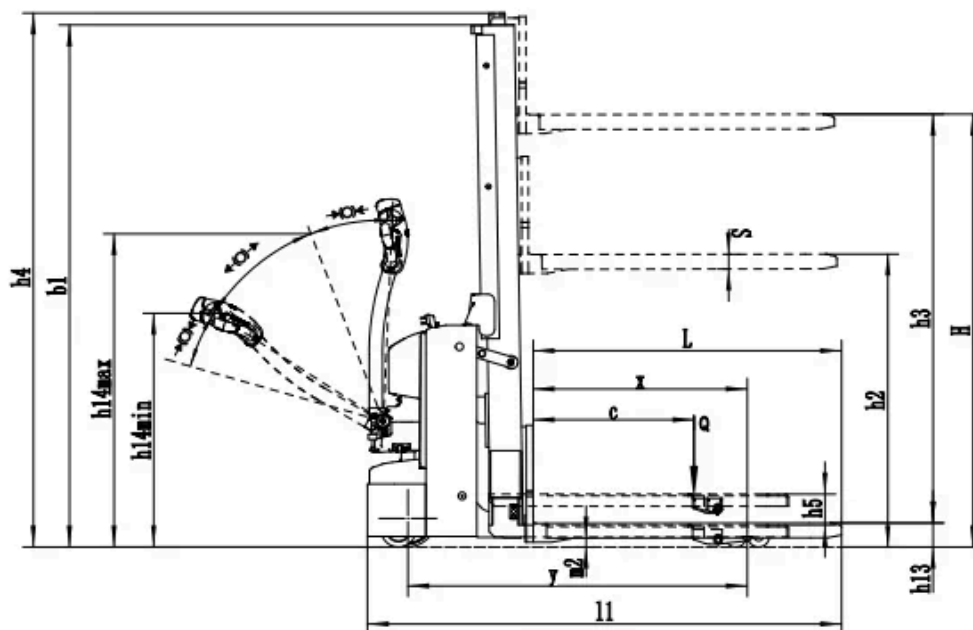
## Advanced Li-ion power with integrated charger

Equipped with a 24V/100Ah Li-ion battery and a 30A integrated charger, the ESi161 supports flexible opportunity charging, zero maintenance, and long service life.

# VDI Chart

	SPECIFICATION	REF	UNIT	VALUE
1.1	Manufacturer			EP
1.2	Model designation			ESi161
1.3	Drive			Electric
1.4	Operator type			Pedestrian
1.5	Load capacity	Q	kg	1600
1.5.1	Load capacity , load with mast lift	Q <sub>1</sub>	kg	800
1.5.2	Load capacity , load with support arm lift	Q <sub>2</sub>	kg	1600
1.6	Load centre distance	c	mm	600
1.8	Load distance, centre of drive axle to fork		mm	798
1.9	Wheelbase		mm	1265
2.1	Service weight		kg	510
2.2	Axle loading, laden front/rear		kg	550/1560
2.3	Axle loading, unladen front/rear		kg	375/135
3.1	Tyre type			Polyurethane
3.2	Tyre size, front		mm	Ø210×70
3.3	Tyre size, rear		mm	Ø80x61
3.4	Additional wheels (castor wheels)		mm	Ø130×55
3.5	Wheels, number front/rear (x=drive wheels)			1,2/4
3.6.1	Tread width, front	b <sub>10</sub>	mm	592
3.7.1	Tread width, rear	b <sub>11</sub>	mm	370
4.0	Max lift height	H	mm	1608
4.15	Lowered height			91
4.19	Overall length		mm	1770
4.2	Retracted mast height	h <sub>1</sub>	mm	1942
4.20	Length to face of forks	l <sub>2</sub>	mm	620
4.21	Overall width	b <sub>1</sub> /b <sub>2</sub>	mm	800
4.22	Fork dimensions	s/e/l	mm	55/190/1150
4.24	Fork carriage width		mm	680
4.25	Distance between fork-arms			680
4.3	Free lift		mm	1515
4.32	Ground clearance, centre of wheelbase		mm	33
4.34.1	Aisle width for pallets 1000×1200 crossways		Ast	2306

SPECIFICATION		REF	UNIT	VALUE
4.34.2	Aisle width for pallets 800×1200 lengthways		Ast	2240
4.35	Turning radius		Wa	1473
4.4	Lift height	h <sub>3</sub>	mm	1520, 800
4.5	Height, mast extended	h <sub>4</sub>	mm	1986
4.6	Initial lift		mm	115
4.9	Height of tiller handle in drive position min./max.			800/1190
5.1	Travel speed, laden/unladen		km/h	4/4.5
5.10	Service brake			Electromagnetic
5.11	Parking brake			Electromagnetic
5.2	Lifting speed, laden/unladen		m/s	0.1/0.12
5.3	Lowering speed, laden/unladen		m/s	0.1/0.07
5.8	Max. gradeability, laden/unladen		%	3/10
6.1	Drive motor rating S2 60 min		kW	0.75
6.2	Lift motor rating at S3 15%		kW	2.2
6.4	Battery nominal capacity		Ah	100
6.4	Battery voltage		V	24
6.5	Battery weight		kg	28
6.6	Energy consumption according to DIN EN 16796		kWh/h	0.4 <sup>1)</sup>
6.7	Turnover output according to VDI 2198			22.73
6.8	Turnover efficiency according to VDI 2198			63.72
8.1	Type of drive control			DC
10.5	Steering design			Mechanical
10.7	Sound pressure level at the drivers ear		dB(A)	<74
15.1	Charger output current		A	30



## Mast Options

MAST TYPE	LIFT HEIGHT (H3, MM)	MAST LOWERED HEIGHT (H1, MM)	MAST EXTENDED HEIGHT, NO BACKREST (H4, MM)	FREE LIFT HEIGHT, NO BACKREST (H2, MM)
Simplex Mast	1608	1942	1986	1515

# Options

---

ITEM	OPTIONS (optional items marked in yellow)
Fork dimension	560*1150
Fork carriage width option	680mm
Load wheel type	Double
Load wheel material	Polyurethane
Drive wheel material	Polyurethane
Battery capacity	100Ah
Charger	24V-30A intergrated charger
Battery display indicator (BDI)	With hourmeter
Castor wheels	Yes and not customized