




# EST122

## PEDESTRIAN STACKER 1.2T

 1200 kg  3613 mm  24 V AGM



The EST122 is ideal for warehouses, shops, and distribution centers handling low-to-medium intensity stacking tasks. Thanks to its compact size and small turning radius (1458 mm), it navigates easily in confined spaces. Equipped with a crawl speed button for precise control and an ergonomic tiller design, it supports operators in safe and comfortable material handling.

SPECIFICATION	REF	UNIT	VALUE
Battery type			AGM
Battery nominal capacity		Ah	85
Battery voltage		V	24
Load capacity	Q	kg	1200
Load centre distance	c	mm	600
Service weight		kg	590
Retracted mast height	$h_1$	mm	2104
Lift height	$h_3$	mm	2930
Height, mast extended	$h_4$	mm	3569
Overall length		mm	1715
Overall width	$b_1/b_2$	mm	792
Length to face of forks	l2	mm	565
Fork dimensions	s/e/l	mm	60/170/1150
Turning radius		Wa	1464
Operator type			Pedestrian
Load distance, centre of drive axle to fork		mm	798

# Features

---

## Strong and stable chassis

The EST122 features a reinforced chassis with side beams and plates, reducing stress and deformation under load. This design ensures a longer service life and dependable stability during daily stacking tasks.



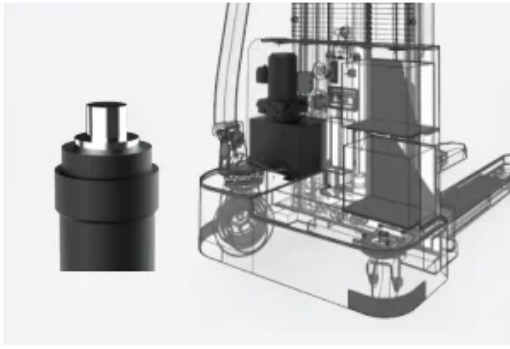
## Rigid duplex mast

Its rigid mast, built with a beam structure, enhances lifting stability and allows smooth stacking up to 2430 mm. Operators benefit from consistent performance even in demanding cycles.

## Easy and precise operation

Equipped with an extra-long offset tiller and crawl speed button, the stacker provides improved visibility and nimble maneuverability. These features allow safe and precise operation in narrow aisles and confined workspaces.





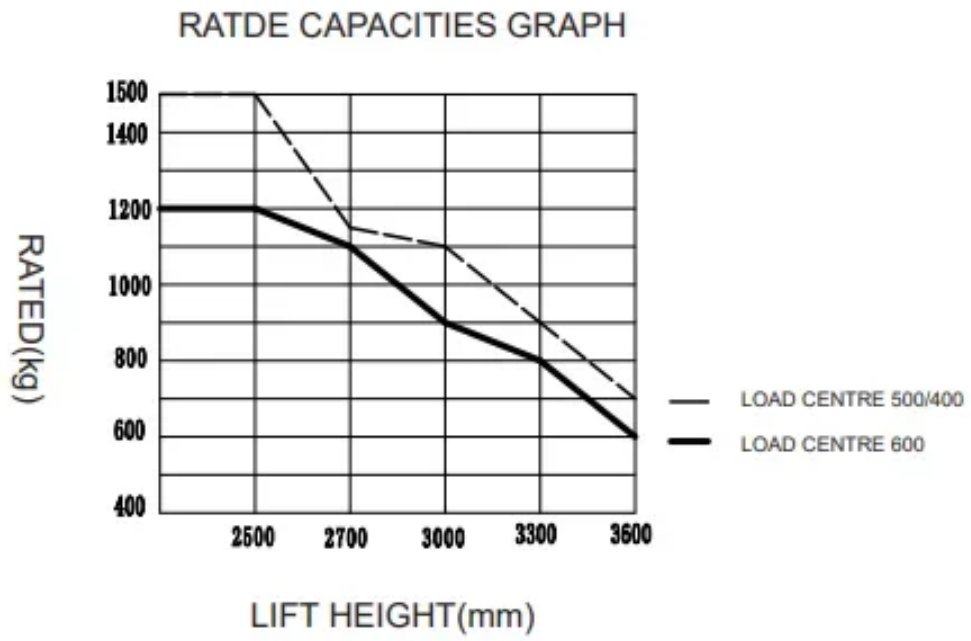
## Efficient hydraulic system

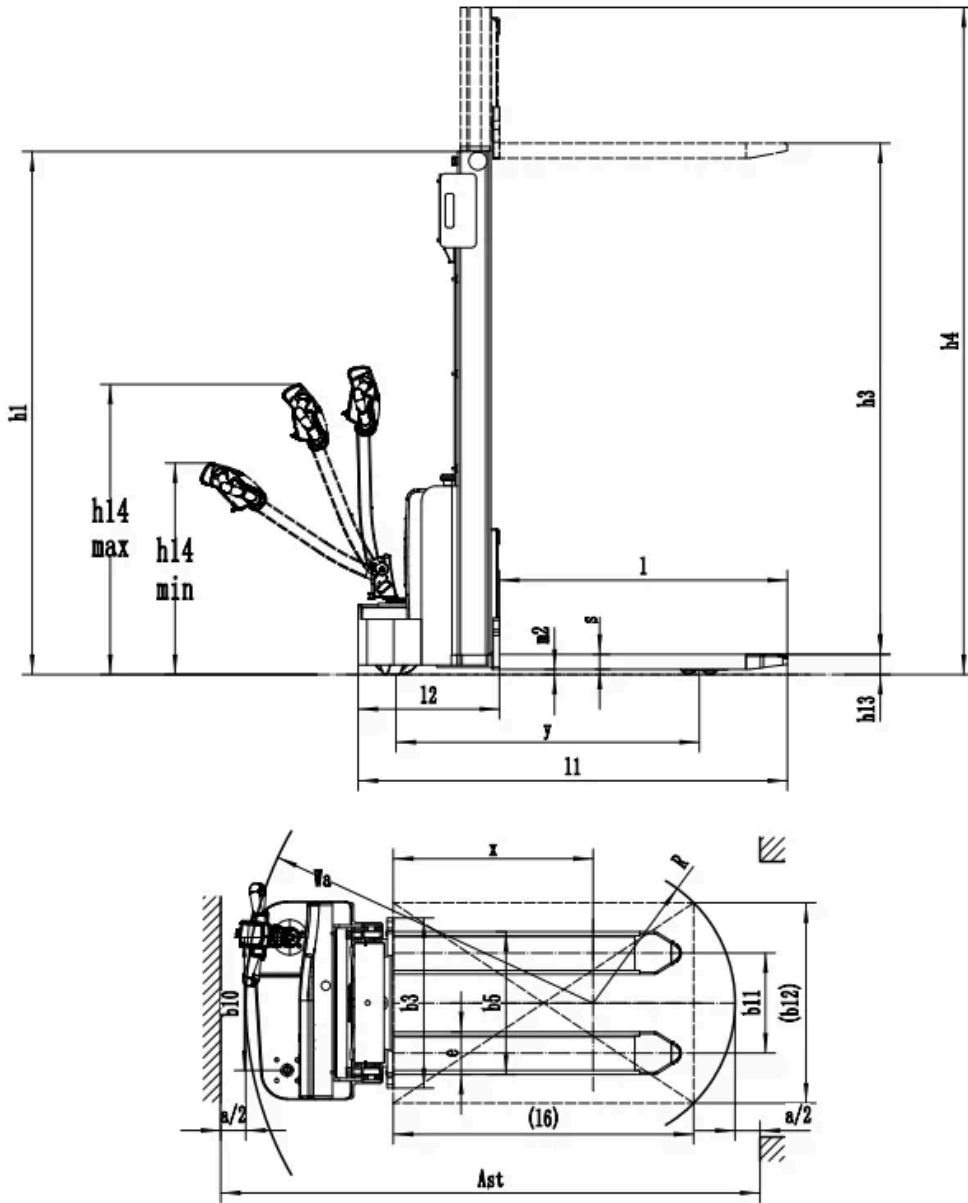
The high-quality hydraulic pump reduces noise while ensuring high efficiency and durability. Shortened lifting times improve overall productivity in daily operations.

## VDI Chart

	SPECIFICATION	REF	UNIT	VALUE
1.4	Operator type			Pedestrian
1.5	Load capacity	Q	kg	1200
1.6	Load centre distance	c	mm	600
1.8	Load distance, centre of drive axle to fork		mm	798
1.9	Wheelbase		mm	1212
2.1	Service weight		kg	590
2.2	Axle loading, laden front/rear		kg	650/1140
2.3	Axle loading, unladen front/rear		kg	450/140
3.1	Tyre type			Polyurethane
3.2	Tyre size, front		mm	Ø210×70
3.3	Tyre size, rear		mm	Ø74×72
3.4	Additional wheels (castor wheels)		mm	Ø130×55
3.5	Wheels, number front/rear (x=drive wheels)			1x , 1/4
3.6.1	Tread width, front	b <sub>10</sub>	mm	531
3.7.1	Tread width, rear	b <sub>11</sub>	mm	405
4.0	Max lift height	H	mm	3613
4.1	Tilt of mast/fork carriage forward/backward		°	0
4.10	Height of wheel arms		mm	-
4.15	Lowered height			85
4.19	Overall length		mm	1715
4.2	Retracted mast height	h <sub>1</sub>	mm	2104
4.20	Length to face of forks	l <sub>2</sub>	mm	565
4.21	Overall width	b <sub>1</sub> /b <sub>2</sub>	mm	792
4.22	Fork dimensions	s/e/l	mm	60/170/1150

	SPECIFICATION	REF	UNIT	VALUE
4.24	Fork carriage width		mm	680
4.25	Distance between fork-arms			570
4.26	Distance between wheel arms/loading surfaces			-
4.3	Free lift		mm	-
4.31	Ground clearance, laden, below mast		mm	-
4.32	Ground clearance, centre of wheelbase		mm	23
4.34.1	Aisle width for pallets 1000×1200 crossways		Ast	2296
4.34.2	Aisle width for pallets 800×1200 lengthways		Ast	2230
4.35	Turning radius		Wa	1464
4.4	Lift height	h <sub>3</sub>	mm	2930
4.5	Height, mast extended	h <sub>4</sub>	mm	3569
4.9	Height of tiller handle in drive position min./max.			760/1140
5.1	Travel speed, laden/unladen		km/h	4.2/4.5
5.10	Service brake			Electromagnetic
5.11	Parking brake			Electromagnetic
5.2	Lifting speed, laden/unladen		m/s	0.09/0.13
5.3	Lowering speed, laden/unladen		m/s	0.10/0.085
5.8	Max. gradeability, laden/unladen		%	3/10
6.1	Drive motor rating S2 60 min		kW	0.75
6.2	Lift motor rating at S3 15%		kW	2.2
6.4	Battery nominal capacity		Ah	85
6.4	Battery voltage		V	24
6.4.1	Battery type			AGM
6.5	Battery weight		kg	47
6.6	Energy consumption according to DIN EN 16796		kWh/h	0.62 <sup>1)</sup>
6.7	Turnover output according to VDI 2198			31.2
6.8	Turnover efficiency according to VDI 2198			55.12
8.1	Type of drive control			DC
10.5	Steering design			Mechanical
10.7	Sound pressure level at the drivers ear		dB(A)	74
15.1	Charger output current		A	10





## Mast Options

MAST TYPE	LIFT HEIGHT (H3, MM)	MAST LOWERED HEIGHT (H1, MM)	MAST EXTENDED HEIGHT, NO BACKREST (H4, MM)	MAST EXTENDED HEIGHT, WITH BACKREST (H4, MM)
2 Standard Mast	2513	1817	-	3032
2 Standard Mast	2713	1917	-	3032
2 Standard Mast	3013	2067	-	3532
2 Standard Mast	3313	2217	-	3832
2 Standard Mast	3613	2367	-	4132

# Options

---

ITEM	OPTIONS (optional items marked in yellow)
Drive wheel material	PU wheel with Pattern
Battery capacity	85Ah/105Ah   China
Pump Motor	2.2Kw, DC China
Traction Motor	0.75Kw DC China