



# ESL122

## PEDESTRIAN STACKER 1.2T

1200 kg 3613 mm 24 V Li-Ion



The ESL122 is designed for light-duty stacking in retail, warehouses, and distribution centers. Its compact design and crawl speed button make it highly effective in confined spaces. The strong chassis and rigid mast ensure safe operation, while the Li-ion battery system provides consistent uptime and quick recharging for daily workflows.

SPECIFICATION	REF	UNIT	VALUE
Battery type			Li-Ion
Battery nominal capacity		Ah	100
Battery voltage		V	24
Load capacity	Q	kg	1200
Service weight		kg	560
Retracted mast height	$h_1$	mm	2104
Lift height	$h_3$	mm	2930
Height, mast extended	$h_4$	mm	3532
Overall length		mm	1715
Overall width	$b_1/b_2$	mm	792
Length to face of forks	l2	mm	792
Fork dimensions	s/e/l	mm	60/170/1150
Turning radius		Wa	1464
Wheelbase		mm	1212
Axle loading, laden front/rear		kg	650/1140
Axle loading, unladen front/rear		kg	450/140

# Features

---

## Reinforced and stable chassis

Built with side impact beams, plates, and boxes, the ESL122 chassis resists deformation from heavy loads, ensuring long-term durability and safe stacking operations.



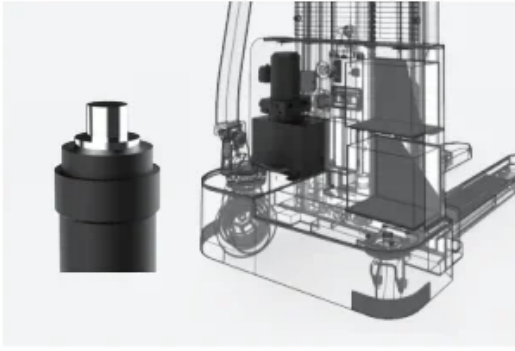
## Rigid duplex mast

The beam-structured mast provides rigidity and smooth lifting up to 2930 mm. Its strength ensures stability and performance even in repetitive light-duty cycles.

## Easy and precise operation

The extra-long offset tiller with crawl speed button enhances operator visibility and maneuverability. This makes the ESL122 ideal for safe handling in narrow aisles and tight warehouse layouts.





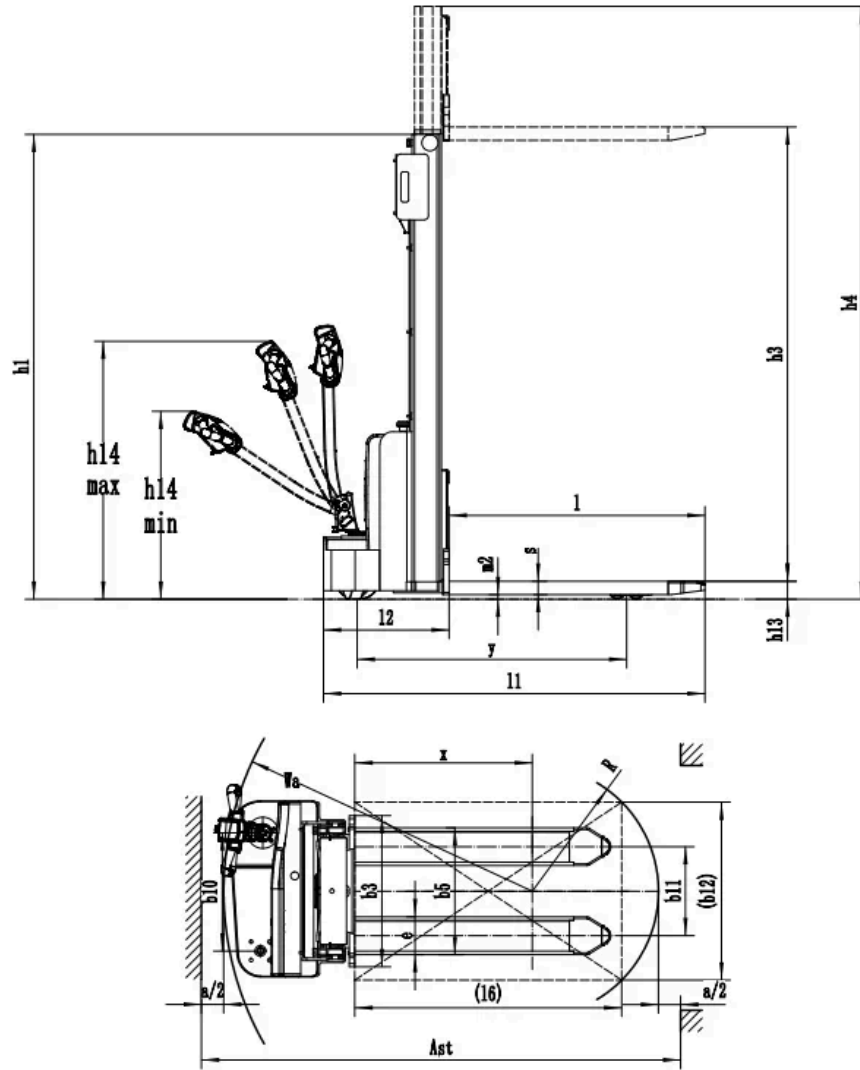
## Efficient hydraulic system

A high-quality hydraulic pump reduces noise, improves lifting efficiency, and shortens cycle times. This ensures both operator comfort and consistent productivity.

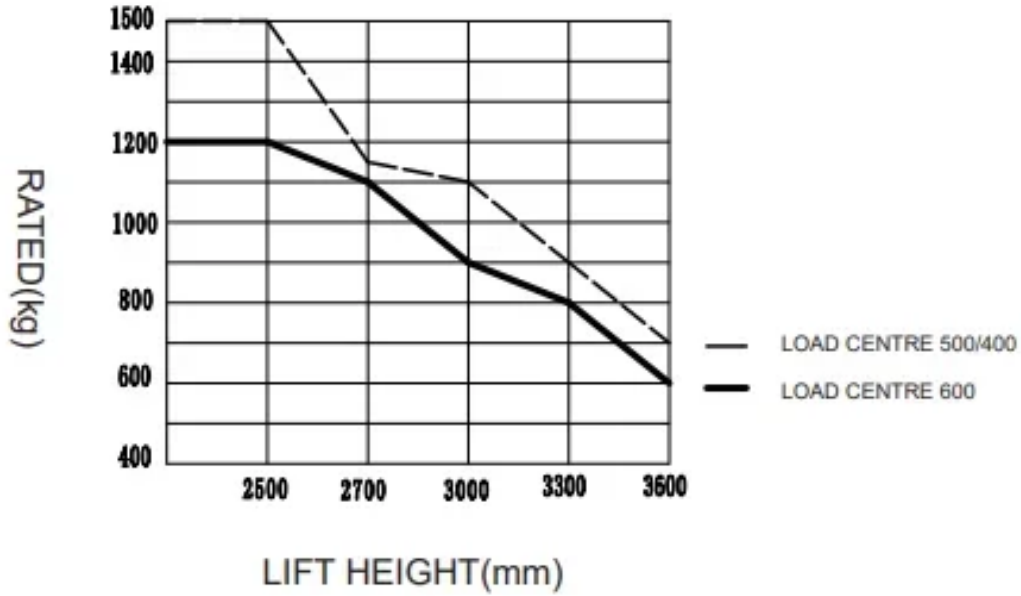
## VDI Chart

	SPECIFICATION	REF	UNIT	VALUE
1.5	Load capacity	Q	kg	1200
1.9	Wheelbase		mm	1212
2.1	Service weight		kg	560
2.2	Axle loading, laden front/rear		kg	650/1140
2.3	Axle loading, unladen front/rear		kg	450/140
3.1	Tyre type			Polyurethane
3.2	Tyre size, front		mm	Ø210×70
3.3	Tyre size, rear		mm	Ø74×72
3.4	Additional wheels (castor wheels)		mm	Ø130×55
3.5	Wheels, number front/rear (x=drive wheels)			1x , 1/4
3.6.1	Tread width, front	b <sub>10</sub>	mm	531
3.7.1	Tread width, rear	b <sub>11</sub>	mm	405
4.0	Max lift height	H	mm	3613
4.10	Height of wheel arms		mm	-
4.19	Overall length		mm	1715
4.2	Retracted mast height	h <sub>1</sub>	mm	2104
4.20	Length to face of forks	l <sub>2</sub>	mm	792
4.21	Overall width	b <sub>1</sub> /b <sub>2</sub>	mm	792
4.22	Fork dimensions	s/e/l	mm	60/170/1150
4.24	Fork carriage width		mm	680
4.25	Distance between fork-arms			570
4.3	Free lift		mm	-
4.32	Ground clearance, centre of wheelbase		mm	30
4.34.1	Aisle width for pallets 1000×1200 crossways		Ast	2296
4.34.2	Aisle width for pallets 800×1200 lengthways		Ast	2230

	SPECIFICATION	REF	UNIT	VALUE
4.35	Turning radius		Wa	1464
4.4	Lift height	h <sub>3</sub>	mm	2930
4.5	Height, mast extended	h <sub>4</sub>	mm	3532
4.9	Height of tiller handle in drive position min./max.			760/1140
5.1	Travel speed, laden/unladen		km/h	4.2/4.5
5.10	Service brake			Electromagnetic
5.2	Lifting speed, laden/unladen		m/s	0.09/0.013
5.3	Lowering speed, laden/unladen		m/s	0.10/0.085
5.8	Max. gradeability, laden/unladen		%	3/10
6.1	Drive motor rating S2 60 min		kW	0.75
6.4	Battery nominal capacity		Ah	100
6.4	Battery voltage		V	24
6.4.1	Battery type			Li-Ion
6.5	Battery weight		kg	28
6.6	Energy consumption according to DIN EN 16796		kWh/h	0.62
6.7	Turnover output according to VDI 2198			31.2
6.8	Turnover efficiency according to VDI 2198			55.12
10.5	Steering design			Mechanical
10.7	Sound pressure level at the drivers ear		dB(A)	74
15.1	Charger output current		A	30



## RATDE CAPACITIES GRAPH



## Mast Options

MAST TYPE	LIFT HEIGHT (H3, MM)	MAST LOWERED HEIGHT (H1, MM)	MAST EXTENDED HEIGHT, NO BACKREST (H4, MM)
2-Standard Mast	2513	1817	3032
2-Standard Mast	2713	1917	3232
2-Standard Mast	3013	2067	3532
2-Standard Mast	3313	2217	3832
2-Standard Mast	3613	2367	4132

## Options

ITEM	OPTIONS (optional items marked in yellow)
Fork dimension	570*1150   685*1150   570*1000   685*1000   570*1220   685*1220
Fork carriage width option	680mm   795mm
Load wheel type	Dual wheels
Handle head type	ET big handle head

ITEM	OPTIONS (optional items marked in yellow)
Load wheel material	Pu
Drive wheel material	PU
Charger	24V-30Ah internal
Battery display indicator (BDI)	With hourmeter
Castor wheels	Yes and not customized