




ESA121-M

ELECTRIC PEDESTRIAN STACKER MONO MAST 1.2T

 1200 kg
  1953 mm
  24 V Li-Ion/AGM



The ESA121 Mono is best suited for retail environments, workshops, and warehouses where lifting requirements are limited to lower rack levels or ground handling. Its compact chassis of just 826 mm in width and precise creep speed control allow it to work efficiently in narrow aisles and tight storage areas. Thanks to its ergonomic tiller and reinforced chassis, it guarantees operator comfort and safe handling of loads in repetitive operations.

SPECIFICATION	REF	UNIT	VALUE
Battery type			Li-Ion/AGM
Battery nominal capacity		Ah	105
Battery voltage		V	24
Load capacity	Q	kg	1200
Load centre distance	c	mm	600
Service weight		kg	490
Retracted mast height	h_1	mm	1951
Lift height	h_3	mm	1530
Height, mast extended	h_4	mm	1991
Overall length		mm	1742
Overall width	b_1/b_2	mm	826
Length to face of forks	l2	mm	592
Fork dimensions	s/e/l	mm	60/170/1150
Turning radius		Wa	1452
Operator type			Pedestrian
Load distance, centre of drive axle to fork		mm	808

Features

Compact mono mast design

The single mast structure makes the ESA121 Mono a cost-effective option for lower lift applications. Its simplicity reduces overall weight while ensuring durability and easy operation.



Light-duty stacking capability

With a maximum lift height of 1.95 meters, the ESA121 Mono is designed for ground-level and low-rack stacking tasks, making it highly practical for retail and small warehouse use.

Flexible battery solutions

Available with both AGM and Li-ion batteries, the truck supports fast charging and low-maintenance operation. The integrated charger adds daily convenience for operators.



User-centered design

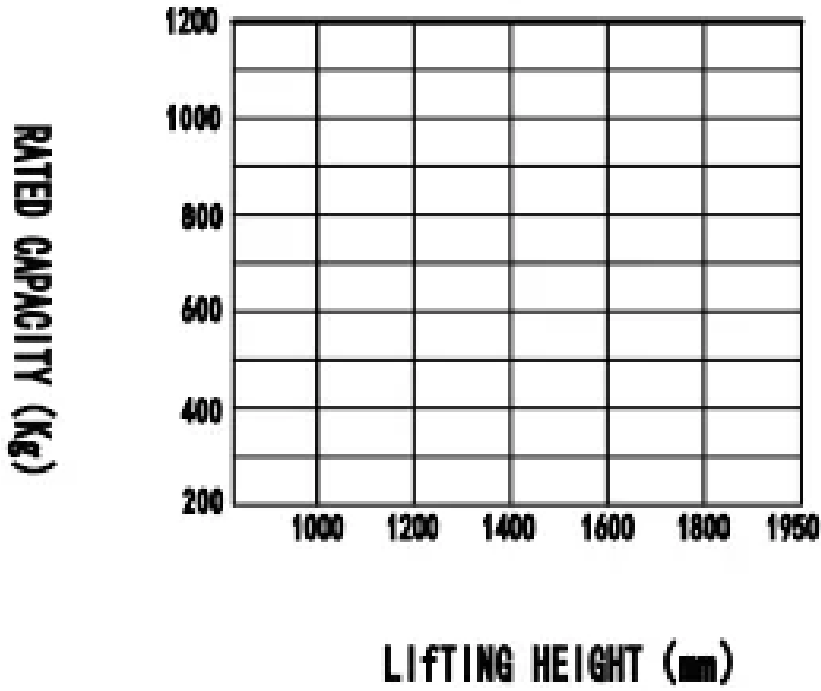
Equipped with an ergonomic tiller, turtle speed mode, and compact chassis, the ESA121 Mono offers precise maneuverability and safe handling even in tight spaces.

VDI Chart

	SPECIFICATION	REF	UNIT	VALUE
1.4	Operator type			Pedestrian
1.5	Load capacity	Q	kg	1200
1.6	Load centre distance	c	mm	600
1.8	Load distance, centre of drive axle to fork		mm	808
1.9	Wheelbase		mm	1210
2.1	Service weight		kg	490
2.2	Axle loading, laden front/rear		kg	560/1130
2.3	Axle loading, unladen front/rear		kg	360/130
3.1	Tyre type			Polyurethane
3.2	Tyre size, front		mm	Ø214×70
3.3	Tyre size, rear		mm	Ø80×61
3.4	Additional wheels (castor wheels)		mm	Ø130×55
3.5	Wheels, number front/rear (x=drive wheels)			1x , 1/4
3.6.1	Tread width, front	b ₁₀	mm	543
3.7.1	Tread width, rear	b ₁₁	mm	400
4.0	Max lift height	H	mm	1953
4.10	Height of wheel arms		mm	-
4.15	Lowered height			90
4.19	Overall length		mm	1742
4.2	Retracted mast height	h ₁	mm	1951
4.20	Length to face of forks	l ₂	mm	592
4.21	Overall width	b ₁ /b ₂	mm	826
4.22	Fork dimensions	s/e/l	mm	60/170/1150
4.24	Fork carriage width		mm	700
4.25	Distance between fork-arms			570
4.26	Distance between wheel arms/loading surfaces			-
4.3	Free lift		mm	1530
4.31	Ground clearance, laden, below mast		mm	-
4.32	Ground clearance, centre of wheelbase		mm	23
4.34.1	Aisle width for pallets 1000×1200 crossways		Ast	2282
4.34.2	Aisle width for pallets 800×1200 lengthways		Ast	2212
4.35	Turning radius		Wa	1452

SPECIFICATION		REF	UNIT	VALUE
4.4	Lift height	h ₃	mm	1530
4.5	Height, mast extended	h ₄	mm	1991
4.7	Height of overhead guard (cabin)		mm	1991
4.8	Seat height/standing height		mm	90
4.9	Height of tiller handle in drive position min./max.			760/1140
5.1	Travel speed, laden/unladen		km/h	4.0/4.5
5.10	Service brake			Electromagnetic
5.11	Parking brake			Electromagnetic
5.2	Lifting speed, laden/unladen		m/s	0.15/0.25
5.3	Lowering speed, laden/unladen		m/s	0.19/0.14
5.8	Max. gradeability, laden/unladen		%	3/10
6.1	Drive motor rating S2 60 min		kW	0.65
6.2	Lift motor rating at S3 15%		kW	3.0
6.4	Battery nominal capacity		Ah	105
6.4	Battery voltage		V	24
6.4.1	Battery type			Li-Ion/AGM
6.5	Battery weight		kg	61
6.6	Energy consumption according to DIN EN 16796		kWh/h	- ¹⁾
6.7	Turnover output according to VDI 2198			-
6.8	Turnover efficiency according to VDI 2198			-
8.1	Type of drive control			DC
10.5	Steering design			Mechanical
10.7	Sound pressure level at the drivers ear		dB(A)	74
15.1	Charger output current		A	15

RATED CAPACITIES GRAPH



Mast Options

MAST TYPE	LIFT HEIGHT (H3, MM)	MAST LOWERED HEIGHT (H1, MM)	MAST EXTENDED HEIGHT, NO BACKREST (H4, MM)	FREE LIFT HEIGHT, NO BACKREST (H2, MM)
Simplex Mast	1613	1951	1991	1530
Simplex Mast	1953	2291	2336	1860

Options

ITEM	OPTIONS (optional items marked in yellow)
Fork dimension	570*1150 685*1150 570*1000 685*1000 570*1220 685*1220
Fork lowered height	90
Fork carriage width option	700mm 800mm
Load wheel type	Double
Handle head type	Hands big handle head
Load wheel material	PU

ITEM	OPTIONS (optional items marked in yellow)
Drive wheel material	PU
Battery capacity	105Ah(AGM) 125Ah(AGM) 100Ah(Li-ion)
Charger	24V-15A integrated (AGM) 24V-30A integrated (Li-ion)
Battery display indicator (BDI)	With time
Turtle speed	Yes and not customized
USB outlet	No Yes and not customized