



EFL253S

LI-ION COUNTERBALANCE FORKLIFT 2.5T

2500 kg 6000 mm 80 V Li-Ion



The EFL 3 Series is engineered for intensive logistics, production, and material handling environments. Ideal for warehouses, manufacturing plants, and distribution centers, it performs reliably on uneven outdoor terrain thanks to its large solid rubber tires and high ground clearance. Optional cabins, heating systems, and a fully enclosed design extend its usability to all-weather operations, ensuring year-round productivity across multiple industries.

SPECIFICATION	REF	UNIT	VALUE
Battery type			Li-Ion
Battery nominal capacity		Ah	230
Battery voltage		V	80
Load capacity	Q	kg	2500
Load centre distance	c	mm	500
Service weight		kg	3955
Retracted mast height	h_1	mm	2090
Lift height	h_3	mm	3000
Height, mast extended	h_4	mm	4025
Overall length		mm	3600
Overall width	b_1/b_2	mm	1154
Length to face of forks	l2	mm	2530
Fork dimensions	s/e/l	mm	40X122X1070
Turning radius		Wa	2305
Operator type			Seated
Load distance, centre of drive axle to fork		mm	495

Features

Upgraded drive and lift performance

Equipped with a 17 kW motor and 26 kW lift power, the EFL253S offers faster acceleration and handling for demanding shifts.

With up to 25% gradeability, it maintains reliable traction on ramps and uneven surfaces. And the maximum lifting speed of 0.5 m/s ensures higher throughput in high-turnover applications.



The truck structure integrates aesthetics and practical design

Both practicality and beauty are reflected in the design of the new EFL series. It inherits the robust chassis of the T8 IC truck series and features a more streamlined and compact counterweight, to better fit in confined space. Plus, the rain-proofed charging port protects the port from water splash and ensures charging safety.

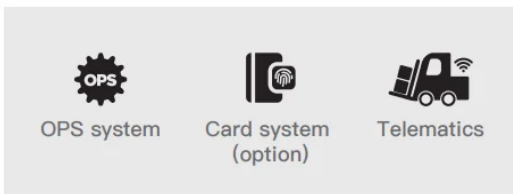
Lithium technology to replace internal combustion engine

The lithium technology has proven itself as an emission-free and maintenance-free alternative to diesel. The new generation of EFL series handles loads with consistently high performance due to opportunity charging even for the most demanding applications. The 80V/230Ah Li-ion battery supports opportunity charging, allowing continuous operation without battery replacement.



Multi-functions for safe operation and easy fleet management

The new EFL series is equipped with a variety of functional configurations, such as OPS system, Telematics and card system, which not only takes security as priority but als



Ergonomic improvements for comfortable operation

The workspace of the new EFL series is more spacious with a simplified panel and a comfortable pedal. The series features a new LED display that clearly shows speed, working hours, battery status, mileage and parking status so the operator can easily grasp the truck conditions just with a glance



New LED display

Spacious legroom

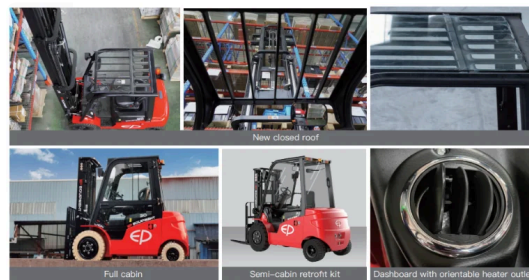
Joystick option available for fatigue-free work

The S/P version can be equipped with hydraulic joystick controls instead of mechanical levers. Positioned at the end of the armrest operations can be done just with fingers, increasing the operator ergonomics through the following controls: all fork hydraulic control including the 4th way, driving direction (F-N-B), horn, emergency stop button.



Outdoor behavior with high-visibility closed roof and cabin options

The bolted overhead guard is fitted as standard with a new closed roof made of tempered glass and flat high-strength steel bars, offering the highest visibility in the category. It enables safe load handling at all heights and increases productivity by increasing the number of pallet movements. Outdoor performance can be enhanced with cabin options such as front windshield, semi-cab, full cabin, heater and A/C. For added flexibility, the front windshield and semi cabin can be offered in a retrofit kit for easy installation by dealers.



Full cabin

Semi-cabin retrofit kit

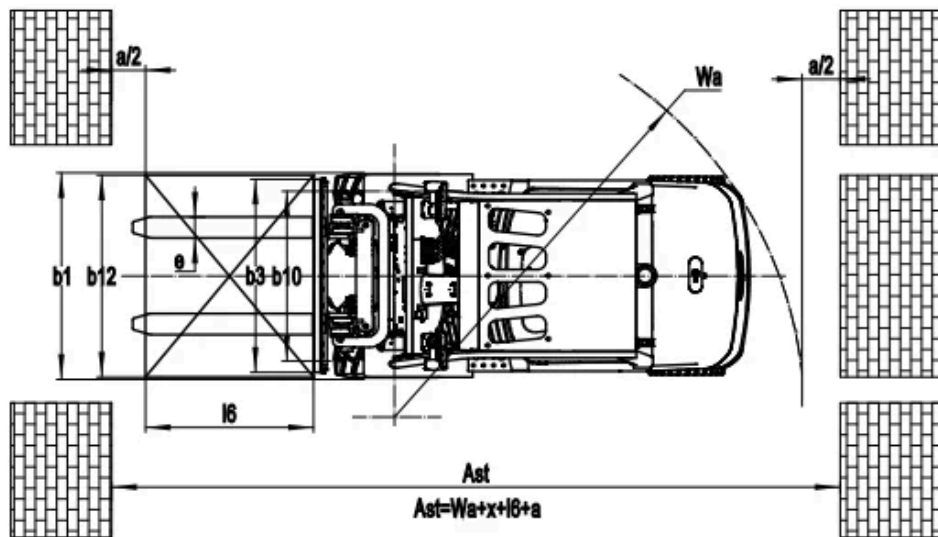
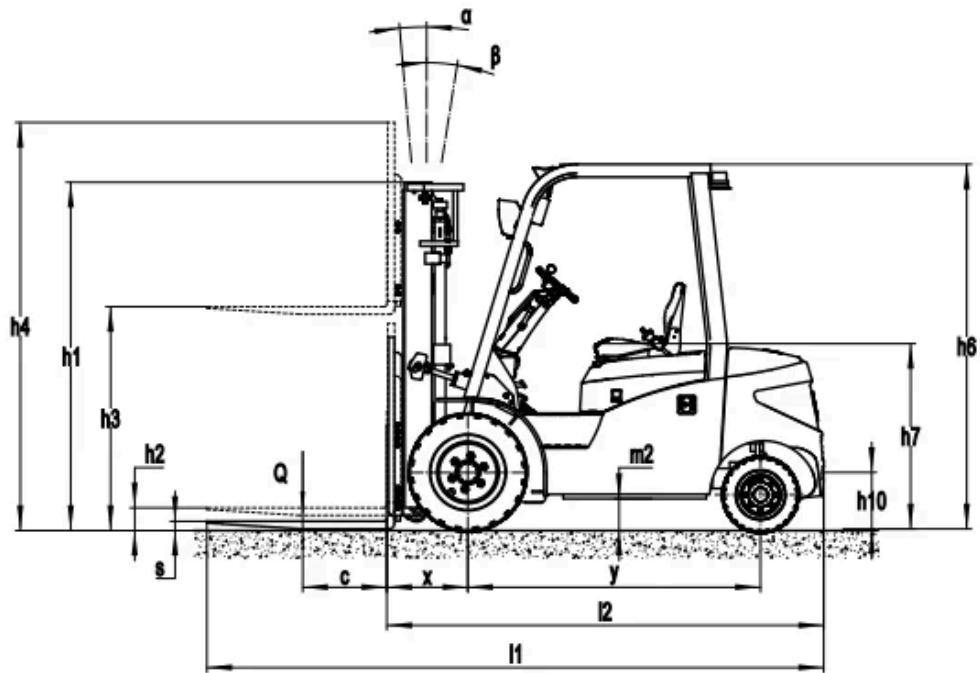
Dashboard with orientable heater outlet

VDI Chart

	SPECIFICATION	REF	UNIT	VALUE
1.4	Operator type			Seated
1.5	Load capacity	Q	kg	2500
1.6	Load centre distance	c	mm	500

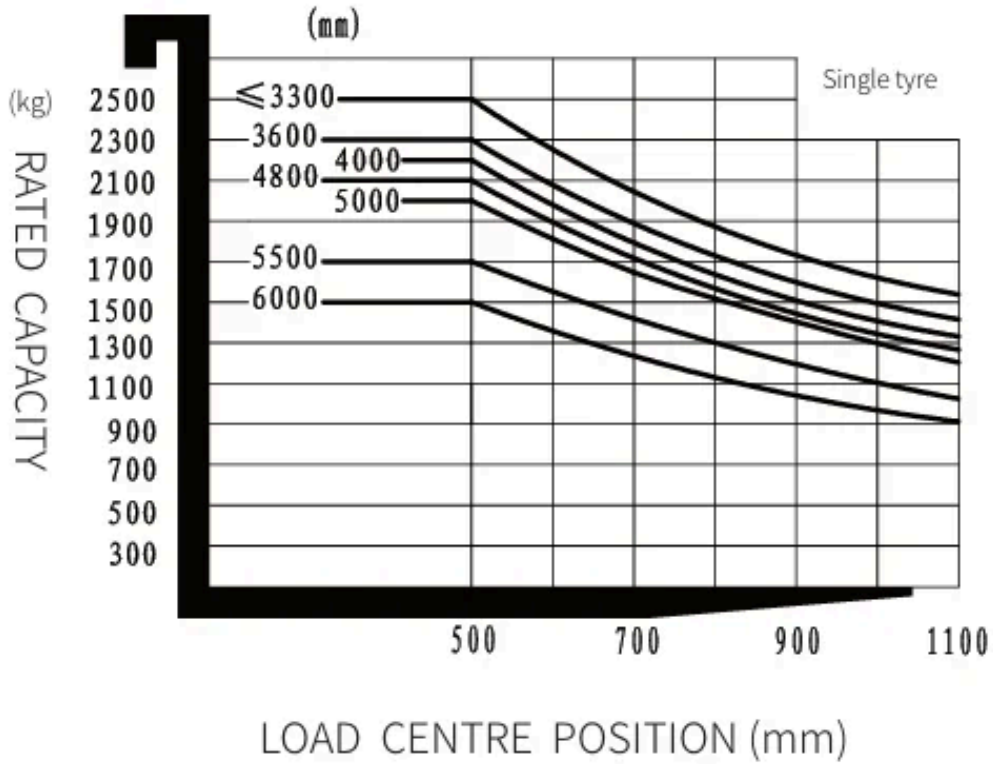
	SPECIFICATION	REF	UNIT	VALUE
1.8	Load distance, centre of drive axle to fork		mm	495
1.9	Wheelbase		mm	1740
2.1	Service weight		kg	3955
2.2	Axle loading, laden front/rear		kg	5795/660
2.3	Axle loading, unladen front/rear		kg	1865/2090
3.1	Tyre type			Solidrubber
3.2	Tyre size, front		mm	7.00-12
3.3	Tyre size, rear		mm	18X7-8
3.4	Additional wheels (castor wheels)		mm	Solidrubber
3.5	Wheels, number front/rear (x=drive wheels)			2X-2
3.6.1	Tread width, front	b_{10}	mm	975
3.7.1	Tread width, rear	b_{11}	mm	955
4.0	Max lift height	H	mm	6000
4.1	Tilt of mast/fork carriage forward/backward		°	6/10
4.10	Height of wheel arms		mm	1095
4.12	Tow coupling height		mm	330
4.13	Loading height, unladen			1095
4.15	Lowered height			2090
4.17	Overhang			3600
4.19	Overall length		mm	3600
4.2	Retracted mast height	h_1	mm	2090
4.2.1	Overall height			4025
4.20	Length to face of forks	l ₂	mm	2530
4.21	Overall width	b_1/b_2	mm	1154
4.22	Fork dimensions	s/e/l	mm	40X122X1070
4.23	A,B Fork carriage class/type A, B			2A
4.24	Fork carriage width		mm	1040
4.3	Free lift		mm	120
4.31	Ground clearance, laden, below mast		mm	125
4.32	Ground clearance, centre of wheelbase		mm	170
4.34.1	Aisle width for pallets 1000×1200 crossways		Ast	4000
4.34.2	Aisle width for pallets 800×1200 lengthways		Ast	4200
4.35	Turning radius		Wa	2305
4.36	Internal turning radius			2305
4.4	Lift height	h_3	mm	3000

	SPECIFICATION	REF	UNIT	VALUE
4.5	Height, mast extended	h_4	mm	4025
4.7	Height of overhead guard (cabin)		mm	2165
4.8	Seat height/standing height		mm	1095
5.1	Travel speed, laden/unladen		km/h	16/17
5.10	Service brake			Hydraulic
5.11	Parking brake			Mechanical
5.2	Lifting speed, laden/unladen		m/s	0.4/0.5
5.3	Lowering speed, laden/unladen		m/s	0.54/0.56
5.5	Drawbar pull, laden/unladen			5810/630
5.6	Max. drawbar pull, laden/unladen			5810/630
5.8	Max. gradeability, laden/unladen		%	20/25
6.1	Drive motor rating S2 60 min		kW	17
6.2	Lift motor rating at S3 15%		kW	26
6.4	Battery nominal capacity		Ah	230
6.4	Battery voltage		V	80
6.4.1	Battery type			Li-Ion
6.6	Energy consumption according to DIN EN 16796		kWh/h	7.24 ¹⁾
6.7	Turnover output according to VDI 2198			135
6.8	Turnover efficiency according to VDI 2198			18.64
8.1	Type of drive control			AC
10.5	Steering design			Hydraulic
10.7	Sound pressure level at the drivers ear		dB(A)	dB(A)
15.1	Charger output current		A	80V65A



RATED CAPACITIES AND LOAD CENTERS GRAPH

SUBTRACT 100Kg WITH SIDE SHIFTER



Mast Options

MAST TYPE	LIFT HEIGHT (H3, MM)	MAST LOWERED HEIGHT (H1, MM)	HEIGHT, MAST EXTENDED, NO SHELVING (H4, MM)	HEIGHT, MAST EXTENDED, WITH SHELVING (H4, MM)	HEIGHT, FREE LIFT, NO SHELVING (H2, MM)	HEIGHT, FREE LIFT, WITH SHELVING (H2, MM)	LOAD DISTANCE CENTRE OF DRIVE AXLE TO FORK (MM)	FORWARD TILT (A, DEG)	BACKWARD TILT (B, MM)	LOAD CAPACITY, SINGLE TYRE (KG)	LOAD CAPACITY, DOUBLE TYRE (KG)
2W300	3000	2090	3565	4025	120	120	495	6	10	2500	-
2W330	3300	2240	3865	4325	120	120	495	6	10	2500	-
2W350	3500	2340	4065	4525	120	120	495	6	10	2400	-
2W360	3600	2390	4165	4625	120	120	495	6	10	2300	-
2W400	4000	2640	4565	5025	120	120	495	6	6	2200	-
2W450	4500	2890	5065	5525	120	120	495	6	6	2300	-
2F300	3000	2035	3565	4025	1470	1010	476	6	10	2500	-
2F330	3300	2185	3865	4325	1620	1160	476	6	10	2500	-

MAST TYPE	LIFT HEIGHT (H3, MM)	MAST LOWERED HEIGHT (H1, MM)	HEIGHT, MAST EXTENDED, NO SHELVING (H4, MM)	HEIGHT, MAST EXTENDED, WITH SHELVING (H4, MM)	HEIGHT, FREE LIFT, NO SHELVING (H2, MM)	HEIGHT, FREE LIFT, WITH SHELVING (H2, MM)	LOAD DISTANCE CENTRE OF DRIVE AXLE TO FORK (MM)	FORWARD TILT (A, DEG)	BACKWARD TILT (B, MM)	LOAD CAPACITY, SINGLE TYRE (KG)	LOAD CAPACITY, DOUBLE TYRE (KG)
2F360	3600	2335	4165	4625	1770	1310	476	6	10	2300	-
3F430	4300	2035	4865	5325	1470	1010	488	6	6	2200	-
3F450	4500	2115	5065	5525	1550	1090	488	6	6	2150	-
3F480	4800	2220	5365	5825	1655	1195	488	6	6	2100	-
3F500	5000	2305	5565	6025	1740	1280	488	6	6	2000	-
3F550	5500	2555	6065	6525	1990	1530	488	3	5	1700	-
3F600	6000	2805	6565	7025	2240	1780	488	3	5	1500	-

Options

ITEM	OPTIONS (optional items marked in yellow)
Fork dimension	122*40*920 122*40*1070 122*40*1150 122*40*1220 122*40*1370 122*40*1500 122*40*1600 122*40*1700 122*40*1820 122*40*1900 122*40*2000 122*40*2200
Fork carriage width option	1040mm Yes and can be customized
Fork carriage height option	1025mm Yes and can be customized
Seat type	Regular Premium Suspension Suspension seat with armrest Suspension+Seatbelt logic switch
Attachments	No Built-in sidsifter External shifter Fork positioner
Traction pin	Yes
Electrostatic chain	Yes
Battery and charger with heating function	No Yes and not customized
Front wheel type	Single Double
Front wheel material	Solid Non-marking
Rear wheel material	Solid Non-marking
Battery capacity	80V460AH 80V230AH
Charger	80V35A external 80V65A external 80V60A external 80V100A external 80V130A external 80V150A external 80V200A external

ITEM	OPTIONS (optional items marked in yellow)
Battery display indicator (BDI)	With time
Area warning lamp	No Red, 1 left + 1 right
Rearview mirror	1 rearview mirror Add rearview mirror on both sides
Buzzer	Yes
OPS system	No Yes and not customized
USB interface	Yes
Telematics	Yes and not customized No
Front lamp	LED
Rear lamp	No LED
Warning lamp	Yes
Steering lamp	Yes
Blue lamp	No 2 front 1 rear 2 front+ 1 rear
Cabin	No Basic half cabin Upgrade half cabin Full cabin
Joystick	No Yes and not customized
Heater	No Yes and not customized